

## ADAPTIVE GRIPPERS



**HAND-E**

### EASY TO USE

- Built for Universal Robots
  - Plug + Play
- Free programming software



**2F-85**

### VERSATILE

- 3 wide-stroke options
- Multiple grip modes
- Built-in position feedback



**2F-140**

### SUIT INDUSTRIAL NEEDS

- Fast and strong
- Precise and durable
- Part validation

**START PRODUCTION FASTER**

## ADAPTIVE GRIPPERS



**HAND-E**

**2F-85**

**2F-140**

	Hand-E	2F-85	2F-140
<b>Nature of the parts</b>			
<b>Size range [mm]</b>	x -> x+50	85	140
<b>Encompassing or form-fit grip payload [kg]</b>	5	5	2.5
<b>Friction grip payload *</b>	3	5	2.5
<b>Parts presentation (input and output)</b>			
<b>Clearance</b>	Tight space	Enough space	Wide space
<b>Thin parts on flat surface [mm]</b>	> 0.75	> 1.5	> 2
<b>Tasks (process &amp; output)</b>			
<b>Grip Force range needed [N]</b>	60 - 130	20 - 235	10 - 135
<b>Position Resolution [mm]</b>	0.2	0.4	0.6
<b>Precision of part detection [mm]</b>	0.5	1.2	1.9
<b>Precision of task</b>	sub-mm	~ mm	> mm
<b>Possible environmental conditions</b>	Lots of dust or liquid splash	Some dust and liquid drip	

\* Calculated for the use of silicon covered fingertips to grip a steel object, at a low robot acceleration.



Pick and Place



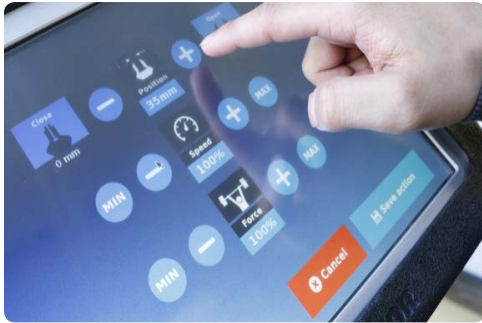
Assembly



Quality Testing



Machine Tending



## TAKE FULL CONTROL

ADJUST THE GRIPPER'S POSITION, SPEED, AND FORCE FOR A PERFECT GRASP



## USE A DUAL-GRIPPER COMBO

REDUCE CYCLE TIME BY ADDING MULTIPLE GRIPPERS ON THE SAME ROBOT



## ENABLE NEW APPLICATIONS WITH VISION AND FORCE CONTROL

INTEGRATE SEAMLESSLY WITH THE ROBOTIQ FT 300 FORCE TORQUE SENSOR AND WRIST CAMERA